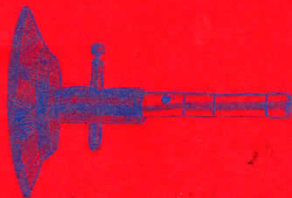
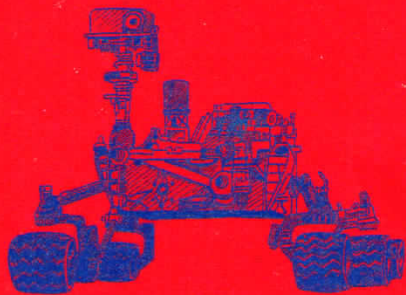
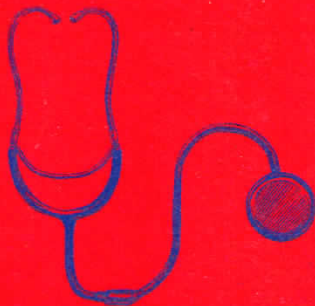


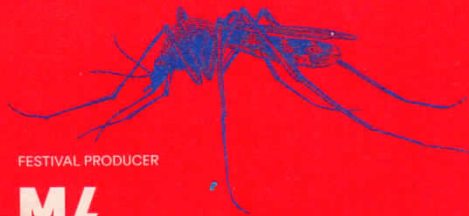
11-21 AUG 2016

**SYDNEY
SCIENCE
FESTIVAL**



**SYDNEY
SCIENCE
FESTIVAL**

SYDNEYSOURCE.COM.AU



FESTIVAL PRODUCER

MA
Museum of
Applied Arts
& Sciences

AS

FESTIVAL PROGRAM



EXHIBITIONS & TOURS

FLORILEGIUM: SYDNEY'S PAINTED GARDEN

An exhibition showcasing contemporary botanical paintings by international and Australian artists illustrating significant plants in the living collections of the Royal Botanic Gardens & Domain Trust.

Museum of Sydney,
Phillip and Bridge Sts
11–21 August
10.00 am–5.00 pm
Cost: \$5–\$20,
SLM members free

NEW ROMANCE: ART AND THE POSTHUMAN AT MCA

Artists from Australia and Korea whose works encourage us to question what it means to be human. Inspired by science fiction, biology, psychology, robotics, consumer technologies and social media.

Museum of
Contemporary Art,
Circular Quay
11–21 August
10.00 am–9.00 pm
Free

TOUR A SCIENCE LABORATORY

Come on a tour of TAFE's state-of-the-art science laboratories, including those used for microbiology, instrumentation, haematology, histology, biology and food technology.

Sydney TAFE Ultimo
College
Thursday 11 August
12.00 pm and 12.30 pm
Free

OVER MANY HORIZONS

An interactive exhibition exploring climate vulnerability in marine ecologies by artist Dr Keith Armstrong, with robot-controlled kinetic light works in a telescopic tunnel of imagery and sound.

University of
Technology Sydney,
UTS Gallery
11, 12, 15–19 August
12.00 pm–6.00 pm
Free

SYDNEY OBSERVATORY NIGHT TOURS

A night tour of the Observatory including the Planetarium, telescope viewing (weather permitting) and dome tour.

Sydney Observatory
11–21 August
6.00 pm and 8.15 pm
Cost: \$14–\$65

TOURS BY TEENS: SYDNEY OBSERVATORY AT NIGHT

For one night only, teens will lead the night tour of the Observatory.

Sydney Observatory
Friday 12 August
6.00 pm–7.30 pm
Cost: \$15–\$65

THE ARTIST AND THE BOTANICAL COLLECTOR

An exhibition featuring a collection of over 30 original wild flower watercolours by Gertrude Lovegrove, prepared as illustrations for the rare William Bäuerlen publication.

Museum of Sydney,
Phillip and Bridge Sts
13–21 August
10.00 am–5.00 pm
Cost: \$5–\$20,
SLM members free

EXPERT TOURS: COLLIDER

Join CERN researchers Mark Scarcella, Yi-ling Hwong or Curtis Black on a tour of the *Collider* exhibition from the Science Museum, London.

Powerhouse Museum
13, 14, 20 and 21 August
11 am, 1 pm and 3 pm
Cost: \$5–\$20

CURATOR TOURS: COLLIDER

Join MAAS curator Dr Andrew Jacob on a tour of this immersive exhibition. Learn about the largest scientific experiment ever constructed – CERN's Large Hadron Collider.

Powerhouse Museum
15–19 August
1.30 pm–2.30 pm
Cost: \$5–\$20

PLANT SCIENCE BY NIGHT

Without plants, life as we know it would cease. Join an after-hours tour with passionate plant scientists as they take you behind the scenes in the Herbarium, Library and Plant Pathology Laboratory.

Royal Botanic Garden,
Sydney
Tuesday 16 August
6.30 pm–8.30 pm
Cost: \$18–\$20

RIVER JOURNEY

A 'science meets art' exhibition illustrating the importance of rivers and wetlands. Environmental issues are explored by both artists and scientists.

UNSW Galleries,
Paddington
18–20 August
10.00 am–5.00 pm
Free

SYDNEYDESIGN.COM.AU
#SDF16

FESTIVAL PRODUCER

MA
Museum of
Applied Arts
& Sciences **AS**

Sydney Design Festival

2-11 September 2016

RUG2

Rug2 presents contemporary designs by students from UNSW Art & Design creatively responding to two design briefs for handmade rugs.

ADSpace,
UNSW Art & Design
2–3 September
11.00 am–6.00 pm
Free

OVER MANY HORIZONS

This interactive, experiential exhibition presented by artist Keith Armstrong investigates the mesh of environmental, social and cultural ecologies that form our worlds.

UTS Gallery
2–3 and 5–10 September
See venue hours
Free

KUDOS ART AND DESIGN AWARD

Celebrate the innovation, excellence and creative activity of all disciplines of UNSW Art & Design.

Kudos Gallery
2–3 September
See venue hours
Free

BEAUTIFUL OBSOLESCENCE

This exhibition presents a selection of beautifully designed but ultimately obsolete consumer electronics and gadgets.

Michael Crouch
Innovation Centre
UNSW
2–11 September
9.00 am–5.00 pm
Free

INTERFACE: PEOPLE, MACHINES, DESIGN

See how design has been applied to information technology products, and how a handful of companies made complicated technology appealing and easy to use.

Powerhouse Museum
2–11 September
10.00 am–5.00 pm
Free with Museum
general admission

LUMINOCITY

Luminocity features work by UNSW Built Environment students. On 3 September, visitors can also talk to students and staff about careers in the design, planning and construction industries.

Gallery, UNSW Built
Environment
2–11 September
10.00 am–6.00 pm
Free

GRAVITY (AND WONDER)

An exhibition of rare scientific instruments and inventions, and specialist objects and archival material from the MAAS collection, alongside the work of artists who examine our fascination with gravity.

Penrith Regional Gallery
& The Lewers Bequest
3–11 September
9.00 am–5.00 pm
Free

ART AND D^oLIGHT

Rita Orsini displays her latest 'Orsini Light' handpainted artist lamps and talks about the design process, her research into lighting technologies and use of recycling.

Ateliers Orsini
3–4 and 8–11 September
See venue hours
Free

DRY!

Adapting and learning how to garden with less water demands a cultural shift in our thinking. This exhibition of contemporary jewellery by Vicki Mason reflects her interest in this.

Studio 20/17
3 and 10 September
11.00 am–5.00 pm
Free

DESIGNED BY

A showcase of a selection of design projects by second, third and fourth year students from across all the studio streams of UNSW Art & Design.

Kudos Gallery
6–10 September
See venue hours
Free